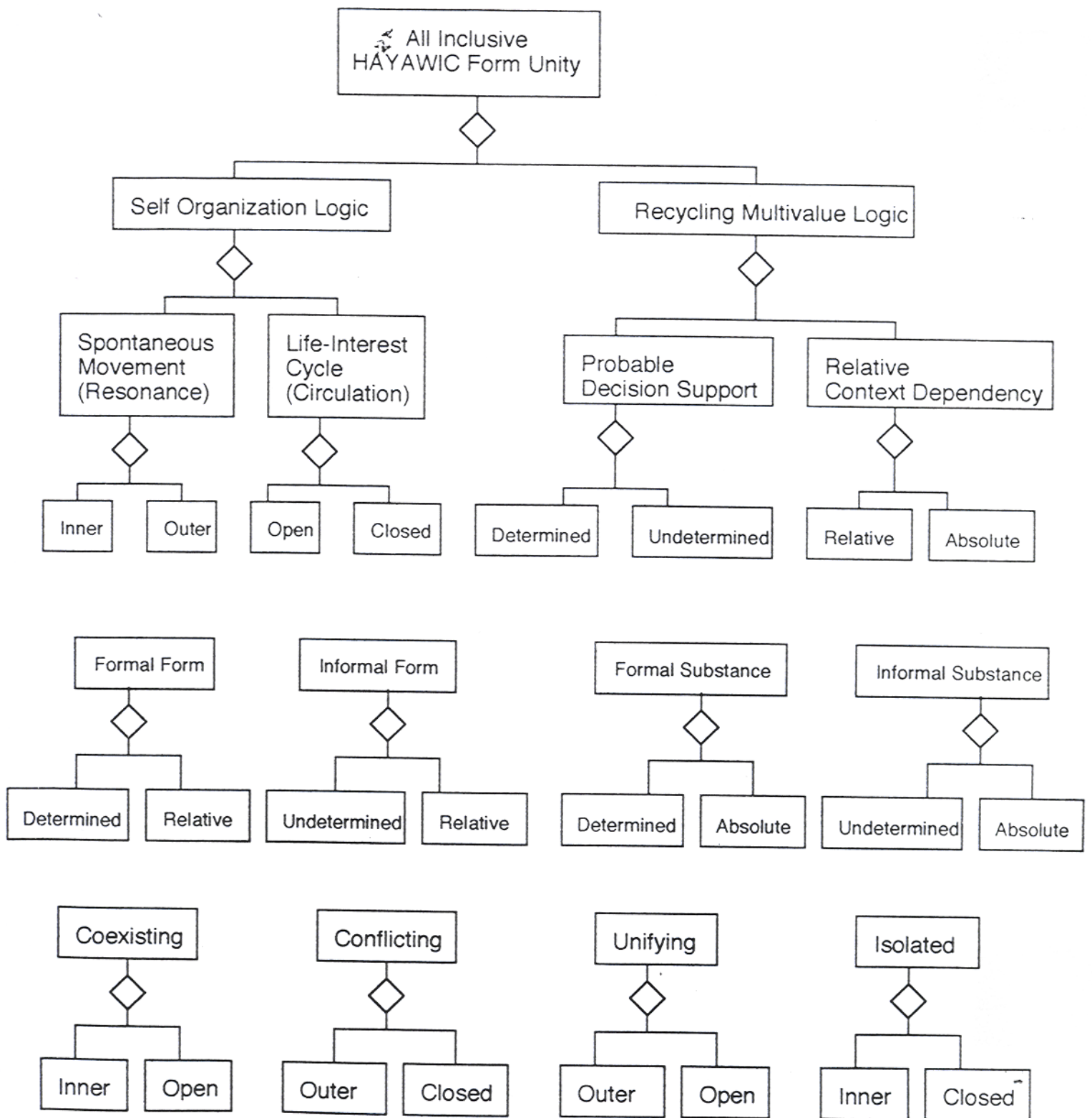
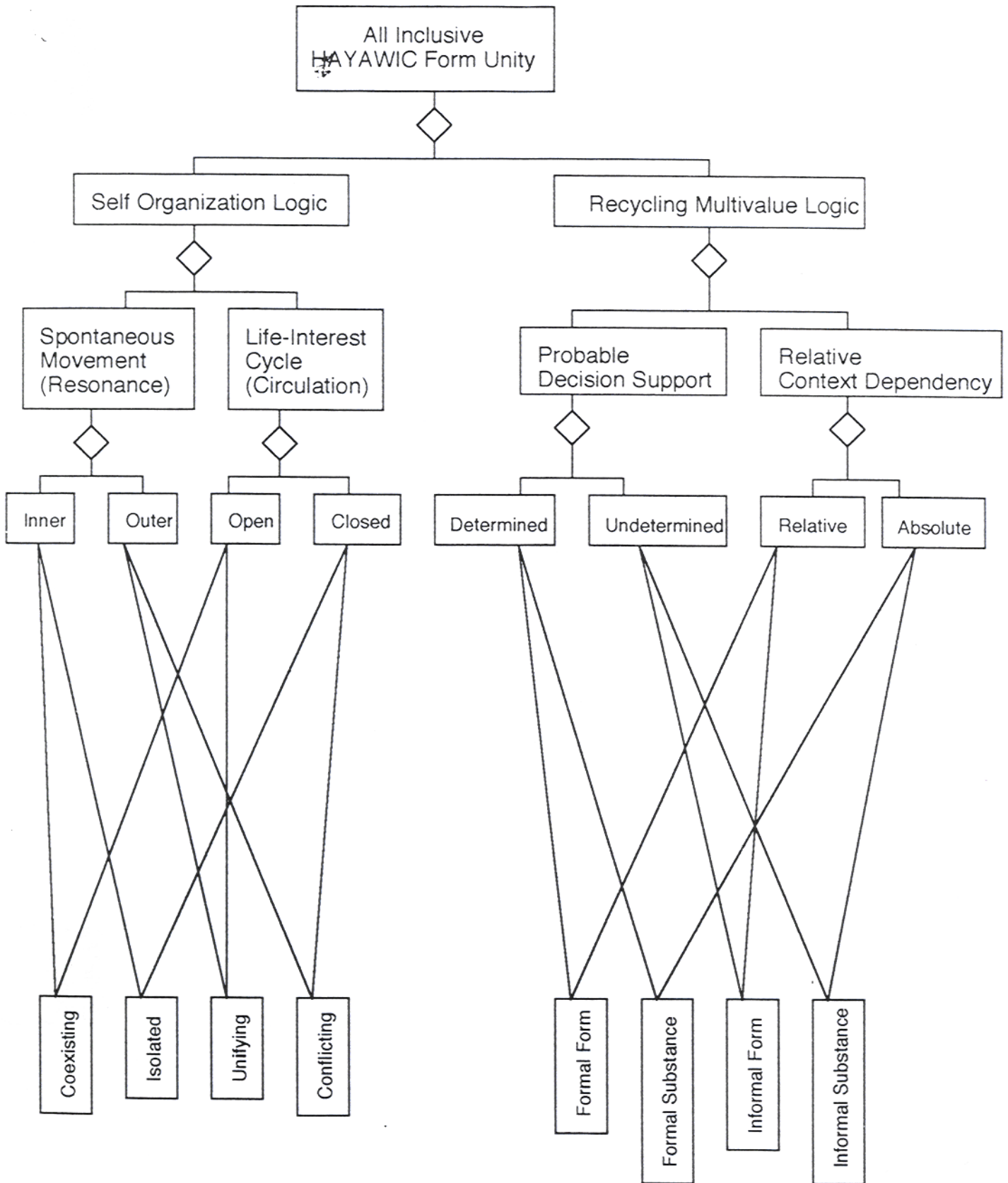


Hierarchy Describing HAYAWIC Form Unity and its Relation to the Interest Square Unity

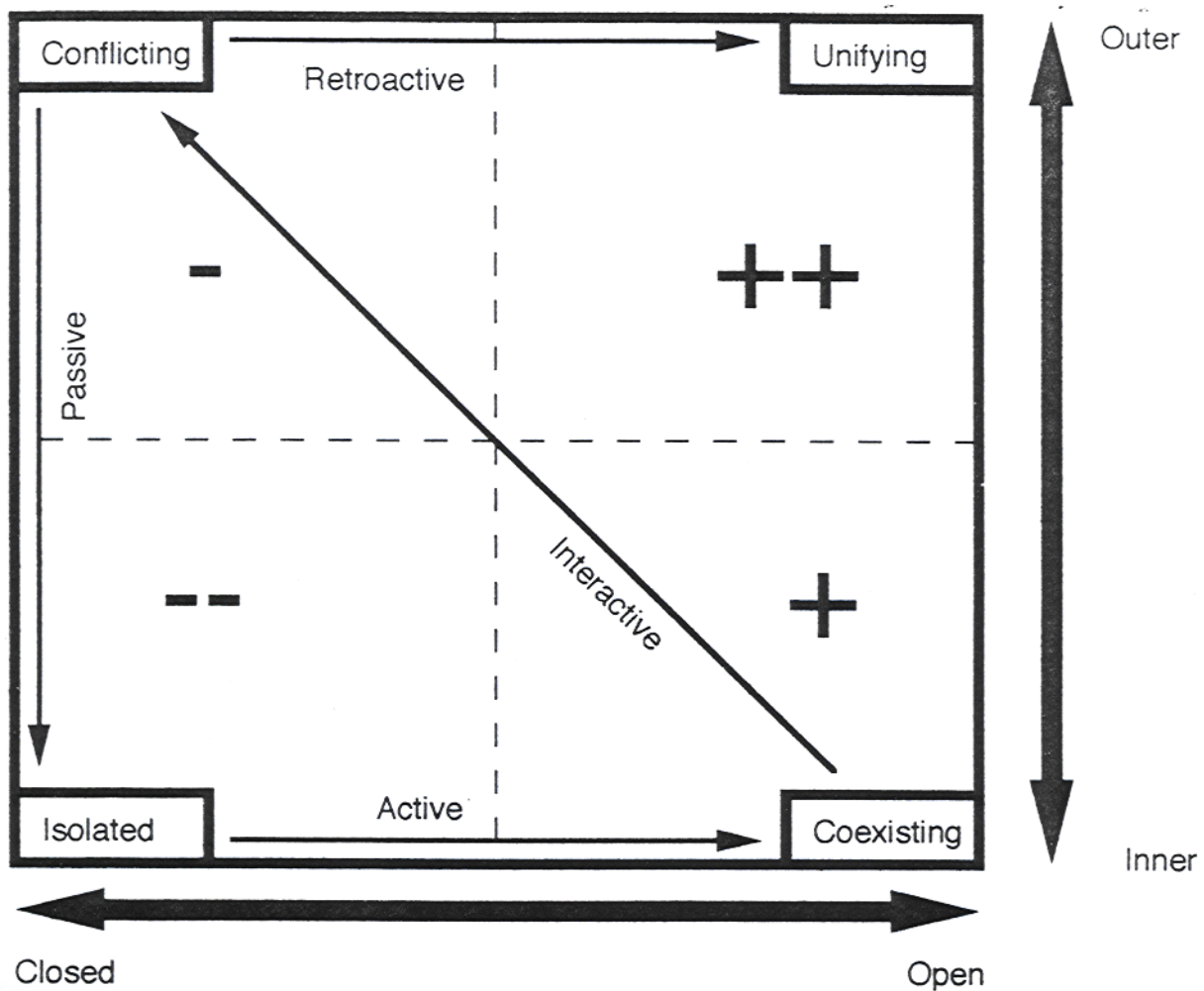


Hierarchy Describing HAYAWIC Form Unity and its Relation to the Interest Square Unity



Interest Square Unity

By: Dr. Raiek Al-Nakari



Vocabulary of HAYAWIC Logic Paradigm

Roots Forming the Interest Square Unity:

Positive - Negative

The overall tone of the direction of change of human strategy in the intuitive key interest being examined.

Inner - Outer

The degree of intensity implied by the intuitive key interest. Inner is low Intensity, Outer is High Intensity. Inner is movement of interest intensity backward to be passive. Outer is movement of intensity of interest forward to be more active.

Open - Closed

The degree of inclusion of others in the intuitive key interest. Open is extended to having multiple centers of interest. Closed is limited to only self centered interest

Interest Square Unity Term Definitions:

Each of these terms is the name of a pattern which is embodied in human speech. When a person is speaking toward a unifying goal, he/she will use Open and Outer oriented words in their expressions. If a person is trying to isolate themselves, they will use Inner and Closed oriented words. If the person has not totally determined their interest, then they may use words from more than one of these patterns, thus causing movement over the Interest Square Unity. This movement may go in either a positive or negative direction depending on the two strategies embodied in the interest. The overall strategy of the interest movement can then be classified as positive or negative.

Unifying is (Outer & Open)

Isolated is (Inner & Closed)

Conflicting is (Outer & Closed)

Coexisting is (Inner & Open)